

### Rear Axle Drive HAA350+

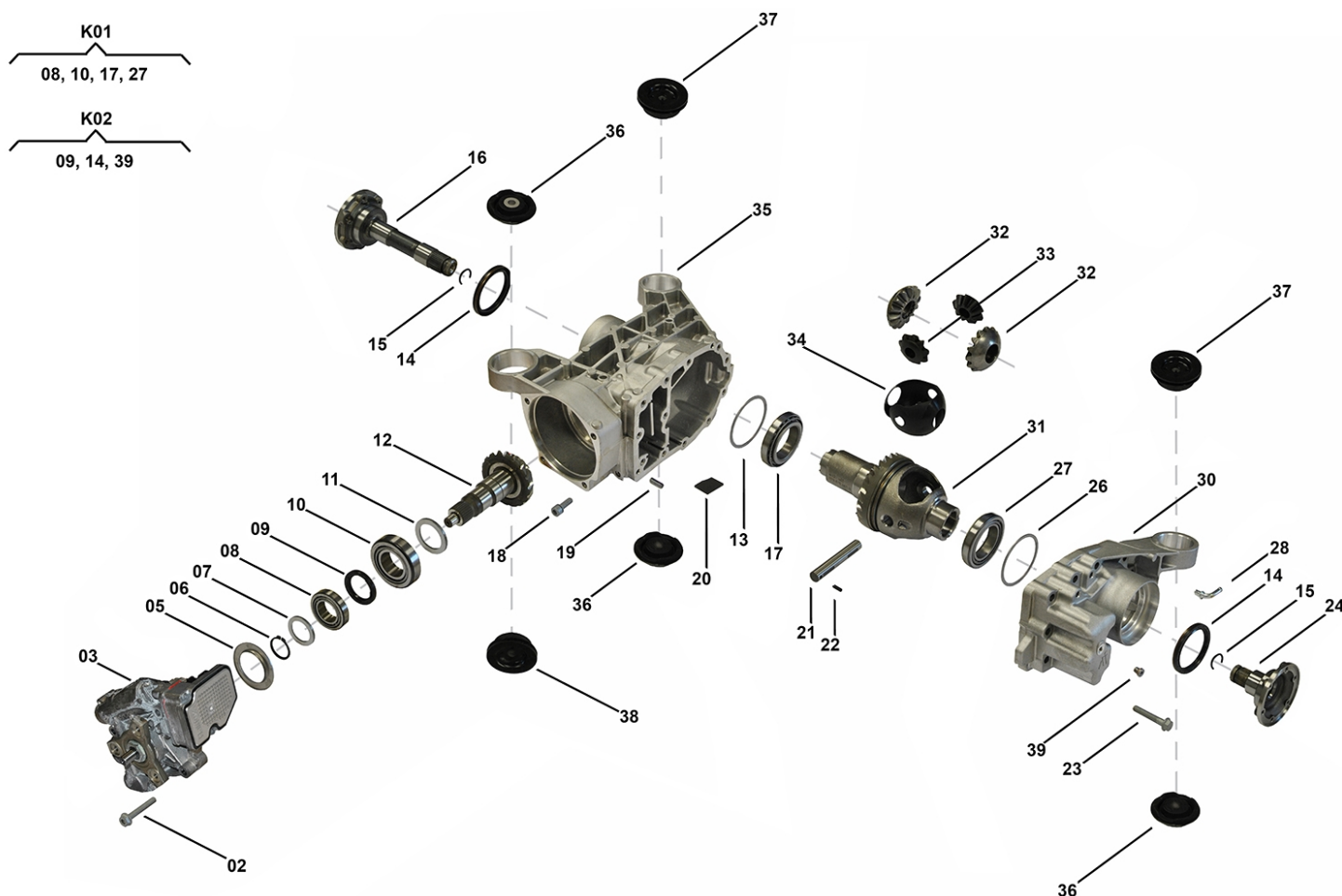
RD00022, RD00023, N408 68 01

OEM No: 0AV525010K; 0AV525010L; 0BR525010G

#### Brands

| Brand | Modelseries |
|-------|-------------|
| SEAT  | Altea       |

#### List of parts



| Pos  | Part number | OEM no     | Quantity | Product name  | Info  |
|------|-------------|------------|----------|---------------|---|
| 'I01 | RD00022     | 0AV525010K |          | OE References | 0AV525010,<br>0AV525010B,<br>0AV525010D,<br>0AV525010H,<br>0AV525010K |
| 'I02 | RD00023     | 0AV525010L |          | OE References | 0AV525010A,<br>0AV525010C,<br>0AV525010E,<br>0AV525010L               |
| 'I03 | N408 68 01  | 0BR525010G |          | OE References | 0BR525010,<br>0BR525010B,<br>0BR525010G                               |
| 'K01 | N408 10 01  |            | 1 piece  | Bearing Kit   | Contains position 08, 10, 17, 27                                      |
| 'K02 | SP01985     |            | 1 piece  | Sealing Kit   | Contains position 09, 14, 39  |

All rights reserved.

This publication may not be reproduced in any form, in whole or in part, without a written approval from JP (Automatic Transmissions) Ltd. Subject to change without notice!

### Rear Axle Drive HAA350+

RD00022, RD00023, N408 68 01

OEM No: 0AV525010K; 0AV525010L; 0BR525010G

#### List of parts

| Pos | Part number           | OEM no      | Quantity  | Product name            | Info  |
|-----|-----------------------|-------------|-----------|-------------------------|---|
| 02  | SP01993               |             | 4 pieces  | Screw                   | Information for HAA350+ Skoda:<br>Used in 0AV525010K, 0BR525010G<br><br>Information for HAA450 VW:<br>Used in 01Z525010D, 01Z525010J, 01Z525010K,<br>0AY525010L, 0BS525010G   |
| 03  | Not available         |             | 1 piece   | Center Differential ASM |   |
| 05  | SP01319               |             | 1 piece   | Oil Guide Plate         | Information for HAA350+ Audi:<br>Used in 0BR525010G, 0BR525010H<br><br>Information for HAA350+ SEAT:<br>Used in 0BR525010G<br><br>Information for HAA350+ Skoda:<br>Used in 0BR525010E, 0BR525010G<br><br>Information for HAA350+ VW:<br>Used in 0BR525010G<br><br>Information for HAA450 VW:<br>Used in 0AY525010L, 0AY525010N, 0BS525010G   |
| 06  | SP01994               |             | 1 piece   | Retaining Ring          |   |
| 07  | Not available         |             | 1 piece   | Shim                    |   |
| 08  | Only available in K01 |             | 1 piece   | Taper Bearing           |   |
| 09  | SP01314               | 02D525275M  | 1 piece   | Radial Sealing          |   |
| 10  | Only available in K01 |             | 1 piece   | Taper Bearing           |   |
| 11  | Not available         |             | 1 piece   | Shim                    |   |
| 12  | SP01318               |             | 1 piece   | Pinion Gear             |   |
| 13  | Not available         |             | 1 piece   | Shim                    |   |
| 14  | SP01684               | 02D525596F  | 2 pieces  | Radial Seal Ring        |   |
| 15  | SP01341               | A0049949840 | 2 pieces  | Snap Ring               |   |
| 16  | SP01335               | 02D525356   | 1 piece   | Shaft Flange Right      |   |
| 17  | Only available in K01 |             | 1 piece   | Taper Roller Bearing    |   |
| 18  | SP01995               |             | 1 piece   | Screw                   |   |
| 19  | SP01996               |             | 2 pieces  | Pin                     |   |
| 20  | SP01998               | 01Z525615   | 2 pieces  | Magnet                  | Information for PL72 ATC:<br>Used in 95834101001 - 95834101005, 95834101011 -<br>95834101015, 95834101020 - 95834101024,<br>95834101030<br><br>Information for PL72 T Audi:<br>Used in 0BU341010N, 0BU341010P, 0BU341010Q<br><br>Information for PL72 T Porsche:<br>Used in 95834102001, 95834102002, 95834102011,<br>0BU341010L, 95834102020<br><br>Information for PL72 T VW:<br>Used in 0BU341010B, 0BU341010C, 0BU341010D,<br>0BU341010E, 0BU341010F, 0BU341010L,<br>0BU341010M, 0BU341010P, 0BU341010R,<br>0BU341010S, 0BU341010T, 0BU341011_,<br>0BU341011A, 0BU341011C, 0BU341011D,<br>0BU341011G, 0BU341011H, 0BU341011J,<br>0BU341011P |
| 21  | SP01362               |             | 1 piece   | Poppet                  |   |
| 22  | SP01997               |             | 1 piece   | Pin                     |   |
| 23  | SP00635               |             | 12 pieces | Hexagon Flange Screw    |   |

All rights reserved.

This publication may not be reproduced in any form, in whole or in part, without a written approval from JP (Automatic Transmissions) Ltd. Subject to change without notice!

### Rear Axle Drive HAA350+

RD00022, RD00023, N408 68 01

OEM No: 0AV525010K; 0AV525010L; 0BR525010G

#### List of parts

| Pos | Part number           | OEM no     | Quantity | Product name             | Info  |
|-----|-----------------------|------------|----------|--------------------------|---|
| 24  | SP01332               | 02D525355B | 1 piece  | Shaft Flange Left        |   |
| 26  | Not available         |            | 1 piece  | Shim                     |   |
| 27  | Only available in K01 |            | 1 piece  | Taper Bearing            |   |
| 28  | SP01359               | 02D525118C | 2 pieces | Angled Pipe              |   |
| 30  | Not available         |            | 1 piece  | Cover Left               |   |
| 31  | Not available         |            | 1 piece  | Differential Housing ASM |   |
| 32  | SP01320               |            | 2 pieces | Gear Differential Spider |   |
| 33  | SP01321               |            | 2 pieces | Gear Differential Spider |   |
| 34  | Not available         |            | 1 piece  | Thrust Washer Compound   |   |
| 35  | Not available         |            | 1 piece  | Cover Right              |   |
| 36  | SP01339               | 1K0599438A | 3 pieces | Mounting                 | Information for HAA350+ Audi:<br>Used in 0AV525010K, 0AV525010L, 0BR525010G<br><br>Information for HAA450 Audi:<br>Used in 0BY525010B |
| 37  | SP01338               | 1K0599437A | 2 pieces | Mounting                 | Information for HAA350+ Audi:<br>Used in 0AV525010K, 0AV525010L, 0BR525010G<br><br>Information for HAA450 Audi:<br>Used in 0BY525010B |
| 38  | SP01312               | 1K0599431A | 1 piece  | Mounting                 | Information for HAA350+ Audi:<br>Used in 0AV525010K, 0AV525010L, 0BR525010G   |
| 39  | Only available in K02 |            | 3 pieces | Plug                     |   |
|     | SP02000               |            | 1 piece  | Sealant                  | Sealant SILICON BLACK (1pce = 300ml)  |