

### Transfer Case VG150 E

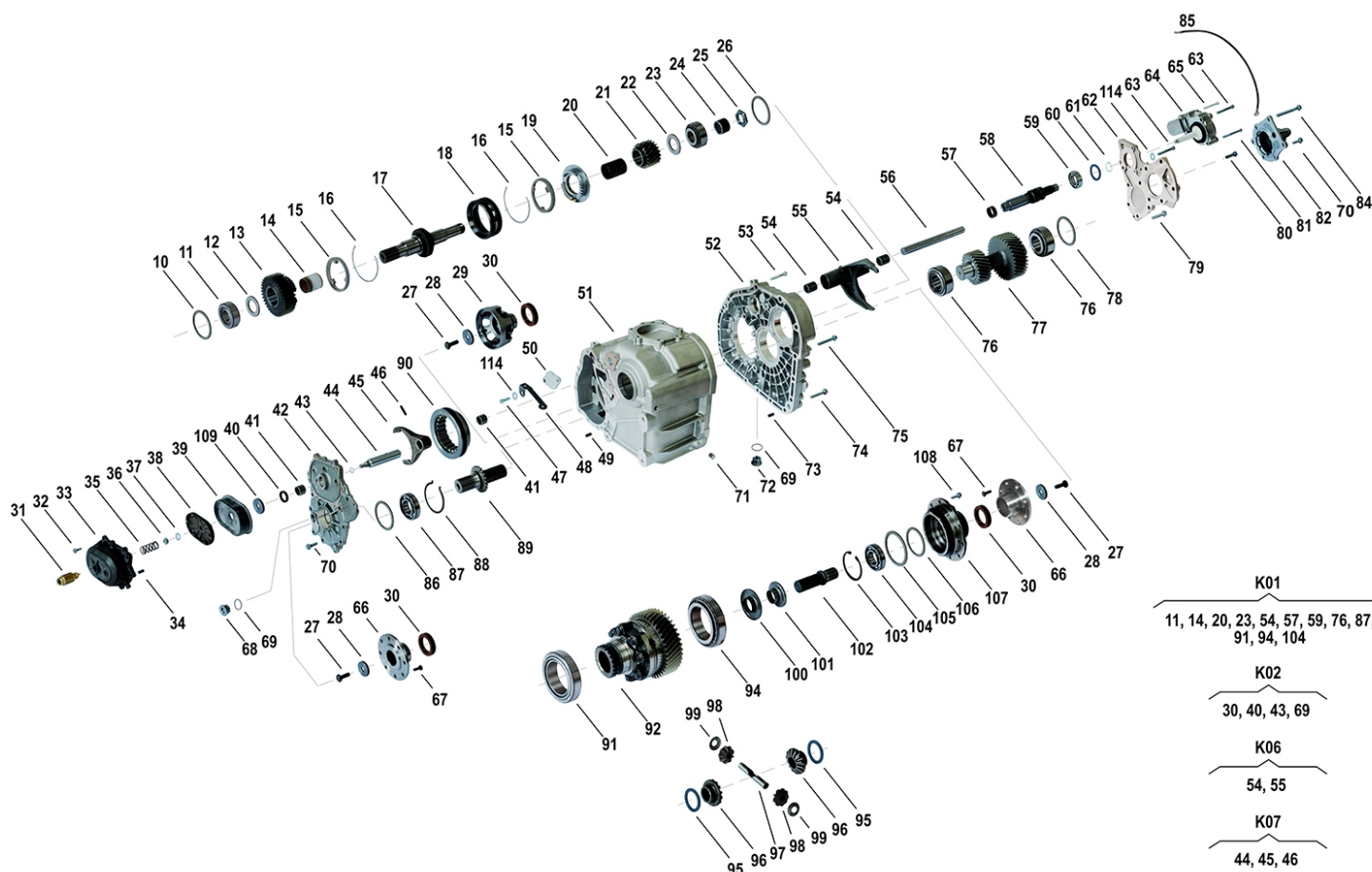
N933 00 01

OEM No: A4632801700

#### Brands

Brand	Modelseries
Mercedes-Benz	G-Class

#### List of parts



Pos	Part number	OEM no	Quantity	Product name	Info
'I01	N933 00 01	A4632801700		OE References	A4632801700, 750.654
'K01	SP01215		1 piece	Bearing Kit	Contains position 11, 14, 20, 23, 54, 57, 59, 76, 87, 91, 94, 104
'K02	SP01214		1 piece	Sealing Kit	Contains position 30, 40, 43, 69
'K06	SP01586	A4632800131	1 piece	Shift Fork ASM	Contains position 54, 55
'K07	SP01300	A4632800556	1 piece	Shifting Rod ASM	Contains position 44, 45, 46
010	SP01131		1 piece	Thrust Washer	
011	SP01005	A0049813605	1 piece	Taper Roller Bearing	
012	SP01148	A4632820062	1 piece	Thrust Washer	
013	SP00999	A4632820311	1 piece	Sprocket Front	Information for VG150: Used in A4632801000, A4632801500
014	SP01147	A4632840536	1 piece	Roller Bearing	
015	SP01002	A4172620537	2 pieces	Synchronizer Cone	
016	SP01145	A4412620093	2 pieces	Circular Spring	
017	SP00001	A4632800821	1 piece	Main Shaft	

All rights reserved.  
This publication may not be reproduced in any form, in whole or in part, without a written approval from JP (Automatic Transmissions) Ltd. Subject to change without notice!

### Transfer Case VG150 E

N933 00 01

OEM No: A4632801700

#### List of parts

Pos	Part number	OEM no	Quantity	Product name	Info
018	SP01001	A4632820423	1 piece	Sliding Collar	
019	SP01149	A4632820134	1 piece	Ring Synchronizer	
020	SP01151	A0139819810	1 piece	Needle Bearing	
021	SP01150	4632820411	1 piece	Sprocket Rear	Information for VG150: Used in A4632801000, A4632801500
022	SP01152	A4632821062	1 piece	Thrust Washer	
023	SP01006	A0099815105	1 piece	Taper Roller Bearing	
024	SP01132	A4632820053	1 piece	Spacer Tube	
025	SP01133	A4639900051	1 piece	Nut	
026	Not available		1 piece	Shim	
027	SP01113	A3609901304	3 pieces	Screw	
028	SP01112	A3182740276	3 pieces	Disc	
029	SP01111	A4632820445	1 piece	Flange	
030	SP01003	A0159970847	3 pieces	Seal Ring	
031	SP01199	A0005450564	1 piece	Pressure Switch	Information for VG150: 2pcs. used in OE code A4632801000, A4632801500
032	SP01122		6 pieces	Screw	
033	Not available		1 piece	Cylinder Depression	
034	SP01170		2 pieces	Pin	
035	SP01121	A4639930201	1 piece	Pressure Spring	
036	SP01193		1 piece	Nut	
037	SP01120	A4639900940	1 piece	Washer	
038	SP01126	A4632840012	1 piece	Piston	
039	SP01119	A4632840094	1 piece	Partition	
040	SP01165	A0169976147	1 piece	Deflector	
041	SP01164	A3892681050	2 pieces	Bushing	
042	Not available		1 piece	Cover Front	
043	SP01118	A0119977445	1 piece	O-Ring	
044	SP01142	A4632840820	1 piece	Shifting Rod	
045	SP01143	A4632840701	1 piece	Shift Fork	
046	Only available in ASM 112		1 piece	Clamping Pin	
047	SP01191		2 pieces	Screw	
048	SP01129	A4612810140	1 piece	Bracket	
049	SP01173		2 pieces	Pin	
050	Not available		1 piece	Cover	
051	Not available		1 piece	Housing	
052	Not available		1 piece	Connection Flange	
053	SP01194		1 piece	Screw	
054	SP01178	A4632840236	2 pieces	Bearing	
055	Only available in ASM 111		1 piece	Shift Fork	
056	SP01135	A4632841020	1 piece	Shifting Rod	
057	SP01172		1 piece	Needle Bearing	
058	SP01136	A4632800257	1 piece	Shifter Shaft	
059	SP01140		1 piece	Groove Ball Bearing	
060	SP01198		1 piece	Shim Ring	
061	SP01115	0BU311321A	1 piece	Retaining Ring	Information for PL72 T VW: Used in 0BU341010P
062	Not available		1 piece	Cover Rear	
063	SP01197		3 pieces	Screw	
064	SP00761	A4635400088	1 piece	Actuator Motor	

All rights reserved.  
This publication may not be reproduced in any form, in whole or in part, without a written approval from JP (Automatic Transmissions) Ltd. Subject to change without notice!

### Transfer Case VG150 E

N933 00 01

OEM No: A4632801700

#### List of parts

Pos	Part number	OEM no	Quantity	Product name	Info
065	SP01196		1 piece	Screw	
066	SP01159	A4632820145	2 pieces	Flange	
067	SP01160	A3199900601	16 pieces	Screw	
068	SP01125	A1159970032	1 piece	Plug	
069	SP01123		2 pieces	Seal Ring	
070	SP01117		16 pieces	Screw	
071	SP01175		1 piece	Pin	
072	SP01124	A1249970132	1 piece	Plug	
073	SP01174		2 pieces	Pin	
074	SP01130		14 pieces	Screw	
075	SP01202		1 piece	Screw	
076	Only available in K01		2 pieces	Taper Roller Bearing	
077	SP01180	A4632830702	1 piece	Countershaft	Information for VG150: Used in A4632801500
078	Not available		1 piece	Shim	
079	SP01141		4 pieces	Screw	
080	SP01162	A4632810263	1 piece	Oil Tube	
081	SP01195		1 piece	Screw	
082	Not available		1 piece	Cover Rear	
084	SP01114		2 pieces	Screw	
085	SP01200	A1235400341	1 piece	Earthing Strap	
086	Not available		1 piece	Shim	
087	SP01166	A0059811425	1 piece	Groove Ball Bearing	
088	SP01167	A4639940041	1 piece	Retaining Ring	
089	SP01168	A4632830505	1 piece	Drive Shaft	
090	SP01116	A4632830423	1 piece	Shift Collar	
091	SP01187	A0099815905	1 piece	Taper Roller Bearing	
092	Not available		1 piece	Differential Housing ASM	
094	SP01188	A0079811405	1 piece	Taper Roller Bearing	
095	Not available		2 pieces	Thrust Washer	
096	SP01183	A6673530215	2 pieces	Differential Side Gear	
097	SP01184	A6683530021	2 pieces	Pin Differential	
098	SP01185	A6673530214	4 pieces	Differential Bevel Gear	
099	SP01186	A6683530024	4 pieces	Rounded Washer	
100	SP01158	A4632820265	1 piece	Oil Baffle	
101	SP01157	A4632820165	1 piece	Oil Baffle	
102	SP01154	A4632830605	1 piece	Main Shaft Rear	
103	SP01156		1 piece	Retaining Ring	
104	SP01155	A0029813025	1 piece	Ball Bearing	
105	Not available		1 piece	Shim 0.15	
106	Not available		1 piece	Shim 0.1	
107	Not available		1 piece	Cover Rear	
108	SP01138		10 pieces	Screw	
109	SP01127	A4632840076	1 piece	Spacer Disc	
114	SP01190		3 pieces	Washer	
	SP02000		1 piece	Sealant	Sealant SILICON BLACK (1pce = 300ml)

All rights reserved.

This publication may not be reproduced in any form, in whole or in part, without a written approval from JP (Automatic Transmissions) Ltd. Subject to change without notice!