

### Transfer Case DCS

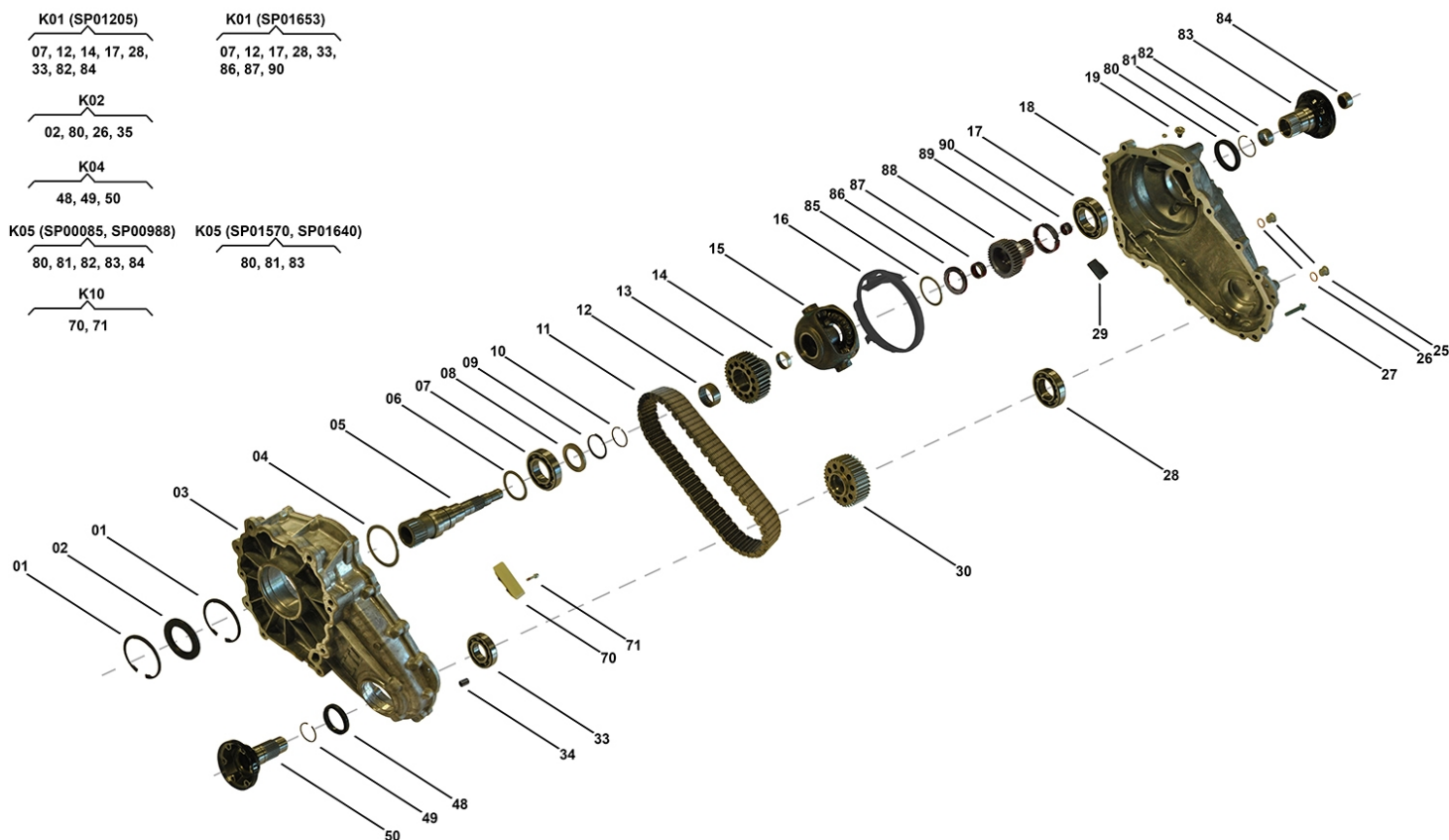
N919 00 02, N919 00 01, TC00282, TC00283, TC00527, TC00537

OEM No: A2512801300; A2512801400; A2512801700; A2512802700; A2512802800; A2512803100; A2512803200

#### Brands

Brand	Modelseries
Mercedes-Benz	GL-Class; M-Class; R-Class

#### List of parts



Pos	Part number	OEM no	Quantity	Product name	Info
'I01	N919 00 02	A2512801300		OE References	A2512800800, A2512801300
'I02	N919 00 01	A2512802700; A2512803100		OE References	A2512800700, A2512800900, A2512801200, A2512801500, A2512801800, A2512802100, A2512802700, A2512803100
'I03	TC00282	A2512801400		OE References	A2512801100, A2512801400
'I04	TC00283	A2512801700		OE References	A2512801700
'I05	TC00527	A2512803200		OE References	A2512802200, A2512803200
'I06	TC00537	A2512802800		OE References	A2512802000, A2512802800

All rights reserved.

This publication may not be reproduced in any form, in whole or in part, without a written approval from JP (Automatic Transmissions) Ltd. Subject to change without notice!

### Transfer Case DCS

N919 00 02, N919 00 01, TC00282, TC00283, TC00527, TC00537

OEM No: A2512801300; A2512801400; A2512801700; A2512802700; A2512802800; A2512803100; A2512803200

#### List of parts

Pos	Part number	OEM no	Quantity	Product name	Info
'K01	SP01205		1 piece	Bearing Kit	Contains position 07, 12, 14, 17, 28, 33, 82, 84  Information for DCS: Used in A2512801300, A2512801700, A2512802700, A2512802800, A2512803100
'K01	SP01653		1 piece	Bearing Kit	Contains position 07, 12, 17, 28, 33, 86, 87, 90  Information for DCS: Used in A2512801400, A2512803200
'K02	N919 05 01		1 piece	Sealing Kit	Contains position 02, 26, 35, 80
'K04	SP00989	A1642820082	1 piece	Flange Kit Front	Contains position 48, 49, 50
'K05	SP00085	A1642870045	1 piece	Flange Kit Rear	Contains position 80, 81, 82, 83, 84  Information for DCD: Used in A1642801200  Information for DCS: Used in A2512801300
'K05	SP00988	A1642820182	1 piece	Flange Kit Rear	Contains position 80, 81, 82, 83, 84  Information for DCD: Used in A1662800800  Information for DCS: Used in A2512801700, A2512802700, A2512802800, A2512803100
'K05	SP01570		1 piece	Flange Kit Rear	Contains position 80, 81, 83  Information for DCS: Used in A2512801400
'K05	SP01640		1 piece	Flange Kit Rear	Contains position 80, 81, 83  Information for DCS: Used in A2512803200
'K10	N919 29 02		1 piece	Sliding Block Kit	Contains position 70, 71  Information for DCS: Used in A2512801300, A2512801400, A2512802700, A2512803100, A2512803200  Information for PL72 T Porsche: Used in 95834102011, 95834102012  Information for PL72 T VW: Used in 0BU341010M, 0BU341011C, 0BU341011K, 0BU341011M
'K10	SP00194		2 pieces	Sliding Block Kit	Contains position 70, 71  Information for DCS: Used in A2512801700, A2512802800
01	SP00317		2 pieces	Locking Ring	Information for DCS: Used in A2512801300, A2512801400, A2512802700, A2512802800, A2512803100, A2512803200
02	SP00986	A0149971346	1 piece	Ring Sealing	
03	Not available		1 piece	Housing Front	
04	Not available		1 piece	Shim	
05	N919 64 01		1 piece	Main Shaft	Information for DCS: Used in A2512801300, A2512802700, A2512802800, A2512803100

All rights reserved.

This publication may not be reproduced in any form, in whole or in part, without a written approval from JP (Automatic Transmissions) Ltd. Subject to change without notice!

### Transfer Case DCS

N919 00 02, N919 00 01, TC00282, TC00283, TC00527, TC00537

OEM No: A2512801300; A2512801400; A2512801700; A2512802700; A2512802800; A2512803100; A2512803200

#### List of parts

Pos	Part number	OEM no	Quantity	Product name	Info
05	SP01047		1 piece	Main Shaft	Information for DCS: Used in A2512801400, A2512803200
05	SP01547		1 piece	Main Shaft	Information for DCS: Used in A2512801700
06	SP00984		1 piece	Disc Spring	
07	N901 46 01		1 piece	Groove Ball Bearing	
08	N901 22 02		1 piece	Sealing Washer	
09	N901 26 01		1 piece	Locking Ring	
10	N901 32 04		1 piece	Snap Ring	
11	N911 29 01	HV091	1 piece	Chain	
12	SP00306		1 piece	Needle Sleeve	
13	N919 29 03		1 piece	Sprocket	Information for DCS: Used in A2512801300, A2512801700, A2512802700, A2512802800, A2512803100
13	SP01050		1 piece	Sprocket	Information for DCS: Used in A2512801400, A2512803200
14	SP01051		1 piece	Bushing	Information for DCS: Used in A2512801300, A2512801700, A2512802700, A2512802800, A2512803100
15	SP01311		1 piece	Differential ASM	Information for DCS: Used in A2512801300, A2512801700, A2512802700, A2512802800, A2512803100
15	SP01624		1 piece	Differential ASM	Information for DCS: Used in A2512801400, A2512803200
16	Not available		1 piece	Deflector	
17	N901 46 02		1 piece	Groove Ball Bearing	
18	Not available		1 piece	Housing Rear	
19	SP00985	A0019980950	1 piece	Air Flue Acceptance	Information for DCS: Used in A2512800700, A2512800800, A2512800900, A2512801100, A2512801200, A2512801300, A2512801400, A2512801500, A2512801700, A2512802000
19	SP01056		1 piece	Cap	Information for DCS: Used in A2512801800, A2512802100, A2512802200, A2512802700, A2512802800, A2512803100, A2512803200
25	N901 37 01	A0029900612; IYB500020	2 pieces	Plug	Information for ITC PLA: Used in IAB500240, IAB500241, IAB500243, IAB500244, IAB500280, LR006016, LR008206
26	N901 22 01	8201057777; IYF500030; TYF101070	2 pieces	Washer Sealing	Information for ITC PLA: Used in IAB500240, IAB500241, IAB500243, IAB500244, IAB500280, LR006016, LR008206
27	SP00314		17 pieces	Tapping Screw	
28	N901 46 05		1 piece	Groove Ball Bearing	
29	SP01046		1 piece	Magnet	
30	N919 29 04		1 piece	Sprocket	
33	N901 46 04		1 piece	Groove Ball Bearing	
34	SP00155		2 pieces	Pin	
48	N901 15 03	A0159975845	1 piece	Ring Sealing	
49	N901 32 01	A0019941440	1 piece	Snap Ring	
50	Only available in K04		1 piece	Flange Front	
70	Only available in K10		1 piece	Sliding Block	
71	Only available in K10		2 pieces	Screw	
80	N901 15 02	A0159975945	1 piece	Ring Sealing	
81	N901 32 03	A0019941540	1 piece	Circlip	

All rights reserved.

This publication may not be reproduced in any form, in whole or in part, without a written approval from JP (Automatic Transmissions) Ltd. Subject to change without notice!



### Transfer Case DCS

N919 00 02, N919 00 01, TC00282, TC00283, TC00527, TC00537

OEM No: A2512801300; A2512801400; A2512801700; A2512802700; A2512802800; A2512803100;  
A2512803200

#### List of parts

Pos	Part number	OEM no	Quantity	Product name	Info
82	SP01054		1 piece	Bearing Needle	Information for DCS: Used in A2512801300, A2512801700, A2512802700, A2512802800, A2512803100
83	Only available in K05		1 piece	Flange Rear	
84	SP01053		1 piece	Bearing Pilot	Information for DCS: Used in A2512801300, A2512801700, A2512802700, A2512802800, A2512803100
85	SP00898	05143675AB	1 piece	Thrust Washer	Information for DCS: Used in A2512801400, A2512803200
86	Only available in K01		1 piece	Needle Roller Thrust Bearing	Information for DCS: Used in A2512801400, A2512803200
87	SP00904	A2209811610	1 piece	Needle Bearing	Information for DCS: Used in A2512801400, A2512803200
88	SP00594		1 piece	Sun Gear Rear	Information for DCS: Used in A2512801400, A2512803200
89	SP00595		1 piece	Spacer Ring	Information for DCS: Used in A2512801400, A2512803200
90	SP00903	A2209811710	1 piece	Needle Bearing	Information for DCS: Used in A2512801400, A2512803200
	SP02000		1 piece	Sealant	Sealant SILICON BLACK (1pce = 300ml)