

Transfer Case ATC500

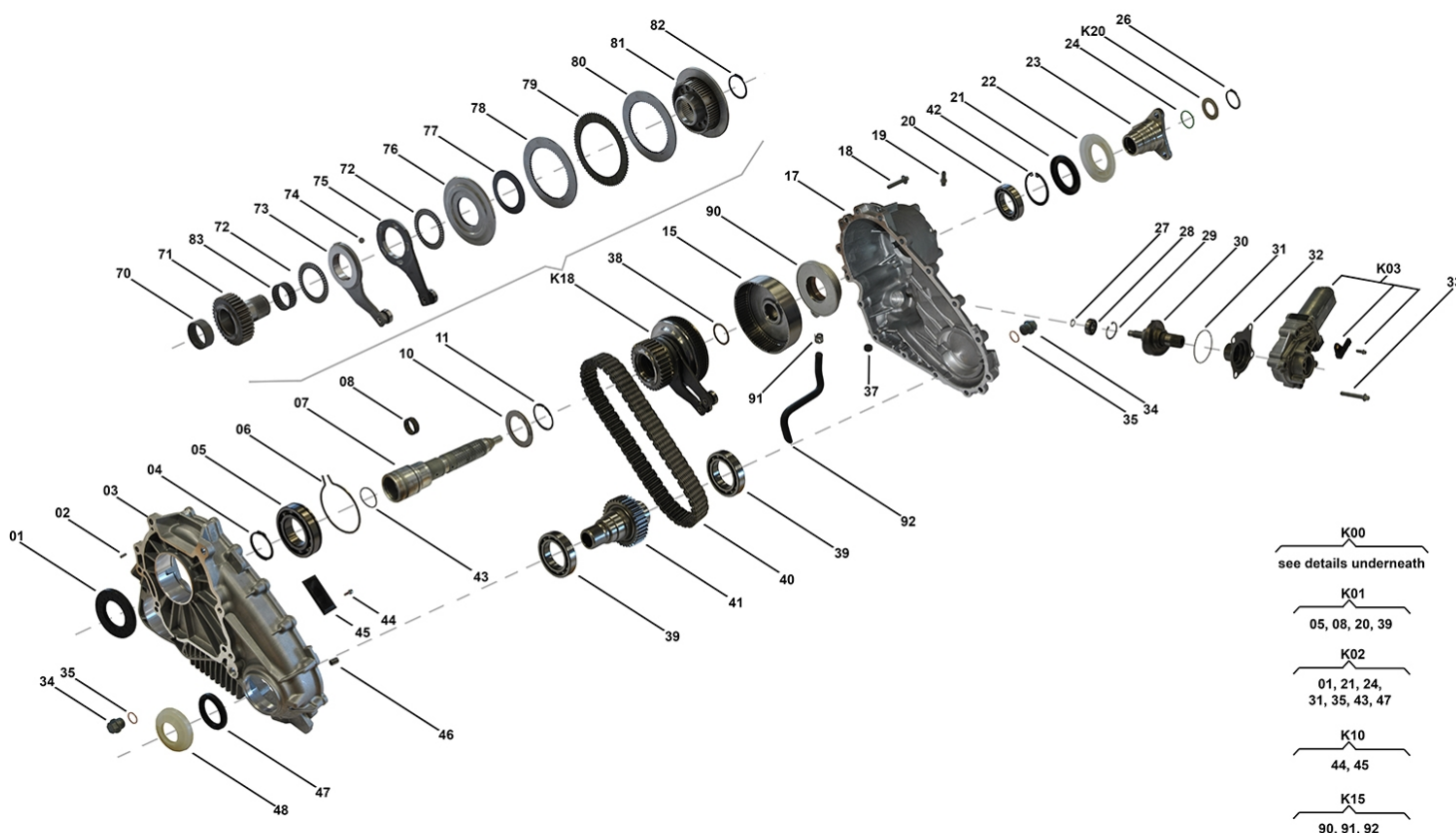
N905 00 01

OEM No: 27107555295; 27107555297

Brands

Brand	Modelseries
BMW	X5

List of parts



- K00
see details underneath
- K01
05, 08, 20, 39
- K02
01, 21, 24,
31, 35, 43, 47
- K10
44, 45
- K15
90, 91, 92

Pos	Part number	OEM no	Quantity	Product name	Info
'I01	N905 00 01	27107555295; 27107555297		OE References	27107526279, 27107535869, 27107555295, 27107555297
'K00	SP02034		1 piece	Repair Kit	Contains position K03, 01, 05, 08, 20, 21, 24, 26, 27, 28, 31, 32, 35, 38, 39, 40, 43, 44, 45, 47, 70, 72, 77, 78, 79, 80, 82, 83, 90, 91 Detailed information can be found in Categories "Repair Kit's"
'K01	N905 10 01		1 piece	Bearing Kit	Contains position 05, 08, 20, 39
'K02	N902 05 01		1 piece	Sealing Kit	Contains position 01, 21, 24, 31, 35, 43, 47
'K03	N905 35 01	27102449709; 27107566296	1 piece	Actuator Kit	Supplied with Code Resistor
'K10	SP00122		1 piece	Sliding Block Kit	Contains position 44, 45
'K15	N905 38 01		1 piece	Oil Pump ASM	Contains position 90, 91, 92
'K18	N905 29 02		1 piece	Sprocket ASM	
'K20	SP00114	27107537629	1 piece	Shim Set	Contains 16 different Shims with Dimensions from 2.1mm up to 3.6mm
01	N902 15 01	27107539262	1 piece	Radial Sealing	
02	SP00154		1 piece	Pin	

All rights reserved.
This publication may not be reproduced in any form, in whole or in part, without a written approval from JP (Automatic Transmissions) Ltd. Subject to change without notice!

Transfer Case ATC500

N905 00 01

OEM No: 27107555295; 27107555297

List of parts

Pos	Part number	OEM no	Quantity	Product name	Info
03	Not available		1 piece	Housing Front	
04	SP00160		1 piece	Retaining Ring	
05	N902 46 01		1 piece	Ball Bearing	
06	SP00140		1 piece	Retaining Ring	
07	N902 29 08		1 piece	Main Shaft ASM	Information for ATC400: Used in 27103455133, 27103455134
08	N902 23 02		1 piece	Needle Bearing	
10	N902 22 02		1 piece	Thrust Washer	
11	N902 29 11		1 piece	Retaining Ring	
15	N902 29 03		1 piece	Drum	Information for ATC400: Used in 27103455133, 27103455134
17	Not available		1 piece	Housing Rear	
18	SP00156		15 pieces	Tapping Screw	
19	SP00128		1 piece	Vent Pipe	
20	N902 46 02		1 piece	Ball Bearing	
21	N902 15 03	27107539265; 331401LA0A	1 piece	Radial Sealing	
22	SP00101	27107537663; 331411LA0A	1 piece	Slinger	
23	SP00104	27107539195	1 piece	Flange Rear	
24	N902 16 02	27107537631	1 piece	O-Ring	
26	SP00112	27107539525; 331381LA0A	1 piece	Retaining Ring	
27	SP00157		1 piece	Retaining Ring	
28	SP00150		1 piece	Ball Bearing	
29	SP00158		1 piece	Retaining Ring	
30	N902 29 13		1 piece	Shaft Actuator Assy	
31	N902 16 03		1 piece	O-Ring	
32	SP00159		1 piece	Needle Sleeve	
33	SP00132	27107539410	4 pieces	Screw	
34	SP00120	27107571645	2 pieces	Plug	
35	N902 22 03	07119963308; 88896062; LR048842	2 pieces	Washer Sealing	Information for ITC PLA: Used in LR023011, LR035617, LR045477, LR049160, LR052611, LR089531
37	SP00130	05143630AA; A2102760098	1 piece	Magnet	
38	N902 22 01		1 piece	Thrust Washer	
39	N905 46 03		2 pieces	Ball Bearing	
40	N905 29 01	HV087	1 piece	Chain	
41	N905 29 04		1 piece	Shaft Sprocket FA Assy	
42	SP00203		1 piece	Retaining Ring	
43	N902 16 01	27107537630	1 piece	O-Ring	
44	Only available in K10		4 pieces	Screw	
45	Only available in K10		2 pieces	Sliding Block	
46	SP00155		2 pieces	Pin	
47	N902 15 02	27107539266	1 piece	Radial Sealing	
48	N905 15 04	27107539212	1 piece	Slinger	
70	N902 23 04		1 piece	Needle Sleeve	
71	Only available in K18		1 piece	Sprocket	
72	SP00134		2 pieces	Needle Ring Axial	
73	SP00394		1 piece	Actuator Ring	
74	SP00302		5 pieces	Ball	
75	SP00395		1 piece	Actuator Ring	

All rights reserved.

This publication may not be reproduced in any form, in whole or in part, without a written approval from JP (Automatic Transmissions) Ltd. Subject to change without notice!

4WD Single Parts

2018



Transfer Case ATC500

N905 00 01

OEM No: 27107555295; 27107555297

List of parts

Pos	Part number	OEM no	Quantity	Product name	Info
76	SP00650		1 piece	Piston	
77	N901 24 01		4 pieces	Disk Spring	
78	Only available in K00 & K18		1 piece	Shim Set	Contains Shim Dimensions 3.40, 3.60, 3.80
79	Only available in K00 & K18		7 pieces	Torque Transfer Shim	
80	Only available in K00 & K18		8 pieces	Steel Plate	
81	Only available in K18		1 piece	Hub	
82	Only available in K00 & K18		1 piece	Retaining Ring	
83	N902 23 03		1 piece	Needle Ring Axial	
90	Only available in K00 & K15		1 piece	Oil Pump	
91	Only available in K00 & K15		1 piece	Clamp	
92	Only available in K15		1 piece	Suction Pipe	
	N927 00 04	00004330136; 00004330563; 83220397244; 83222409710	1 piece	Transmission Fluid	Shipment in 1 liter bottles. Fillgrade information please see Oil List.
	SP02000		1 piece	Sealant	Sealant SILICON BLACK (1pce = 300ml)

All rights reserved.

This publication may not be reproduced in any form, in whole or in part, without a written approval from JP (Automatic Transmissions) Ltd. Subject to change without notice!