

### Transfer Case ATC350

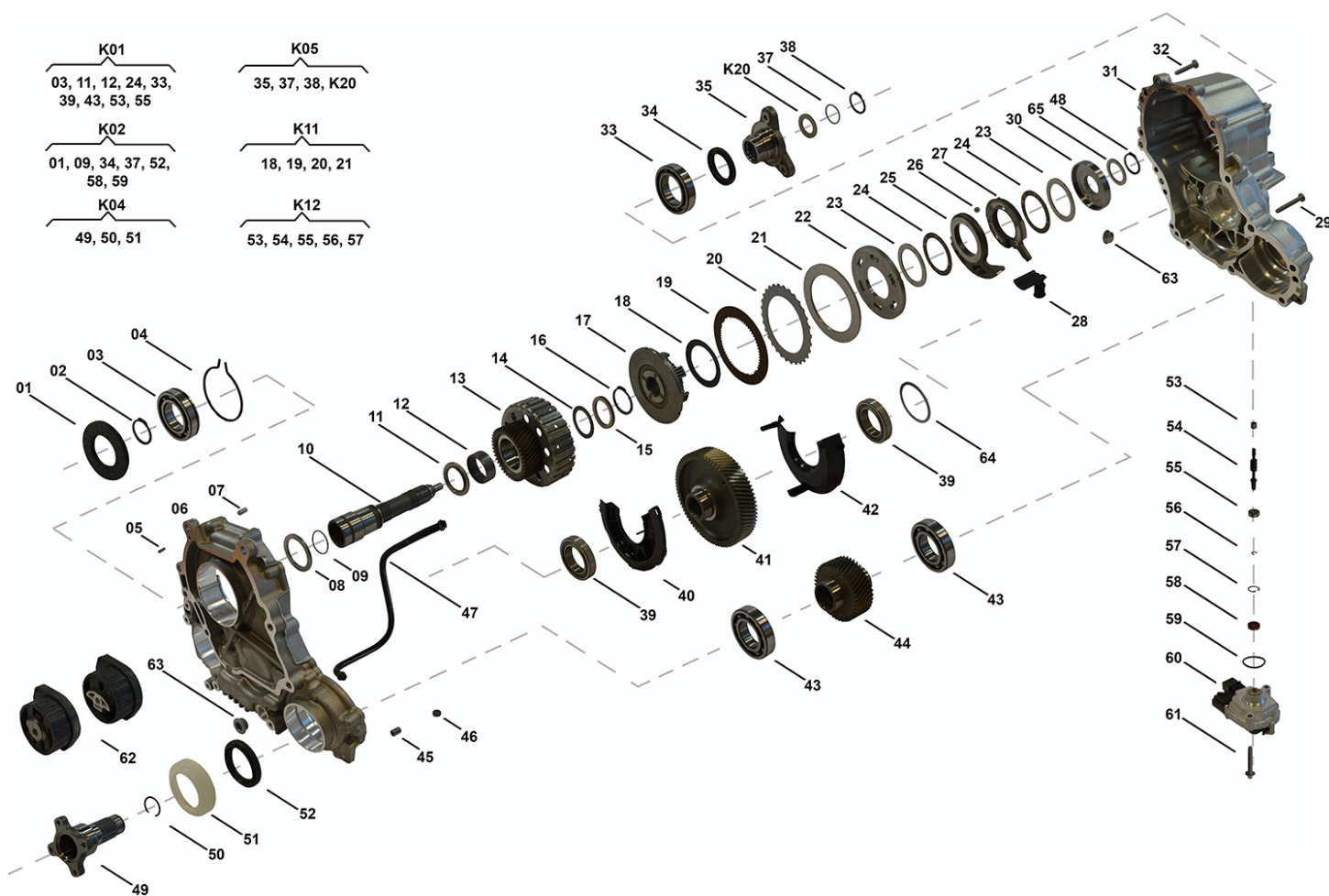
N929 00 01, N929 00 05, N929 00 03

OEM No: 27107643748; 27107643749; 27107643750

#### Brands

Brand	Modelseries
BMW	5; 7; X1

#### List of parts



Pos	Part number	OEM no	Quantity	Product name	Info
'101	N929 00 01	27107643748		OE References	27107607638, 27107609194, 27107610584, 27107619176, 27107635755, 27107636477, 27107639266, 27107643748

All rights reserved.  
This publication may not be reproduced in any form, in whole or in part, without a written approval from JP (Automatic Transmissions) Ltd. Subject to change without notice!

### Transfer Case ATC350

N929 00 01, N929 00 05, N929 00 03

OEM No: 27107643748; 27107643749; 27107643750

#### List of parts

Pos	Part number	OEM no	Quantity	Product name	Info
'I02	N929 00 05	27107643750		OE References	27107605406, 27107609191, 27107610582, 27107619177, 27107619777, 27107629604, 27107636172, 27107636479, 27107639260, 27107643750
'I03	N929 00 03	27107643749		OE References	27107619928, 27107635756, 27107636478, 27107639268, 27107643749
'K01	N929 10 01		1 piece	Bearing Kit	Contains position 03, 11, 12, 24, 33, 39, 43, 53, 55
'K02	N929 05 01		1 piece	Sealing Kit	Contains position 01, 09, 34, 37, 52, 58, 59
'K04	SP00956	27107593438	1 piece	Flange Kit Front	Contains position 49, 50, 51 Including Tube of Assembly Paste
'K05	N929 29 02	27107593439	1 piece	Flange Kit Rear	Contains position 36, 37, 38, K20  Information for ATC350: Used in 27107643748, 27107643749  Information for ATC35L: Used in 27107643754, 27107643755
'K05	N929 29 03	27107593440	1 piece	Flange Kit Rear	Contains position 36, 37, 38, K20  Information for ATC350: Used in 27107643750  Information for ATC35L: Used in 27108643149, 27108662300
'K11	N929 07 01		1 piece	Clutch Kit	Contains position 18, 19, 20, 21
'K12	N927 35 01		1 piece	Shaft Actuator Kit	Contains position 53, 54, 55, 56, 57
'K20	SP00115	27107546670	1 piece	Shim Set	Contains 13 different Shims with Dimensions from 2.90mm up to 4.10mm
01	N902 15 01	27107539262	1 piece	Radial Sealing	
02	N901 26 01		1 piece	Locking Ring	
03	Only available in K01		1 piece	Ball Bearing	
04	SP00140		1 piece	Retaining Ring	
05	SP00154		1 piece	Pin	
06	Not available		1 piece	Housing Rear	
07	SP00155		1 piece	Pin	
08	SP01075		1 piece	Shim	
09	SP00445	27107609202	1 piece	O-Ring	
10	SP01078		1 piece	Input Shaft	
11	N922 23 01		1 piece	Axial Needle Roller Bearing	
12	Only available in K01		1 piece	Needle Bearing	
13	N929 29 01		1 piece	Gear ASM with Drum Clutch	
14	SP01086		1 piece	Shim	
15	Not available		1 piece	Shim	
16	SP01034		1 piece	Adjusting Ring	
17	SP01096		1 piece	Hub	
18	Only available in K11		5 pieces	Spring Disc	
19	Only available in K11		8 pieces	Friction Plate	

All rights reserved.

This publication may not be reproduced in any form, in whole or in part, without a written approval from JP (Automatic Transmissions) Ltd. Subject to change without notice!

### Transfer Case ATC350

N929 00 01, N929 00 05, N929 00 03

OEM No: 27107643748; 27107643749; 27107643750

#### List of parts

Pos	Part number	OEM no	Quantity	Product name	Info
20	Only available in K11		7 pieces	Steel Plate	
21	Only available in K11		1 piece	Plate	
22	SP01082		1 piece	Piston	
23	SP01083		2 pieces	Shim	
24	Only available in K01		2 pieces	Bearing Cage and Roller	
25	SP01102		1 piece	Actuator Ring Ball Ramp	
26	SP01085		3 pieces	Ball	
27	SP01212		1 piece	Actuator Ring	
28	Not available		1 piece	Deflector	
29	SP00942	332011LA0A	6 pieces	Screw	
30	SP01084		1 piece	Ring	
31	Not available		1 piece	Housing Front	
32	SP01042		8 pieces	Screw	
33	Only available in K01		1 piece	Ball Bearing	
34	N922 15 01	27107546667	1 piece	Radial Sealing	
35	Only available in K05		1 piece	Flange Rear	
37	SP01037	27107599326	1 piece	Seal O-Ring	
38	SP00112	27107539525; 331381LA0A	1 piece	Retaining Ring	
39	Only available in K01		2 pieces	Taper Roller Bearing	
40	Not available		1 piece	Deflector Rear	
41	SP01108		1 piece	Gear Intermediate	
42	Not available		1 piece	Deflector Front	
43	Only available in K01		2 pieces	Ball Bearing	
44	SP01074		1 piece	Gear Front Output	
45	SP01080		1 piece	Sleeve Centering	
46	SP00130	05143630AA; A2102760098	1 piece	Magnet	
47	Not available		1 piece	Tube ASM	
48	SP01213		1 piece	Retaining Ring	
49	Only available in K04		1 piece	Shaft Flange	
50	SP00223	27107546679	1 piece	Snap Ring	
51	SP00103	27107537665	1 piece	Slinger	
52	N902 15 02	27107539266	1 piece	Radial Sealing	
53	Only available in K01 & K12		1 piece	Needle Bearing	
54	Only available in K12		1 piece	Shaft Actuator	
55	Only available in K01 & K12		1 piece	Ball Bearing	
56	Only available in K12		1 piece	Retaining Ring	
57	Only available in K12		1 piece	Retaining Ring	
58	SP01038	27107593452	1 piece	Radial Seal Ring	
59	SP01040	27107593451; 95834150100	1 piece	Seal O-Ring	

All rights reserved.

This publication may not be reproduced in any form, in whole or in part, without a written approval from JP (Automatic Transmissions) Ltd. Subject to change without notice!

### Transfer Case ATC350

N929 00 01, N929 00 05, N929 00 03

OEM No: 27107643748; 27107643749; 27107643750

#### List of parts

Pos	Part number	OEM no	Quantity	Product name	Info
60	Not available	27608643153	1 piece	Actuator Motor FR	Information for ATC350: Used in 27107643750  Information for ATC35L: Used in 27108643149, 27108643150, 27108662300, 27108662968  Information for ATC450: Used in 27107643753  Information for ATC45L: Used in 27108643151, 27108643152, 27107854164
60	SP02030	27607643762	1 piece	Actuator Motor CAN	Information for ATC350: Used in 27107643748, 27107643749  Information for ATC35L: Used in 27107643754, 27107643755  Information for ATC450: Used in 27107643751, 27107643752  Information for ATC45L: Used in 27107643758, 27107643759
61	SP01045	27107593450; 673002351; 90038507101; 95834150200	2 pieces	Screw	
62	SP01207	22316773125	1 piece	Mounting	Information for ATC300: Used in 27107599690, 27107599693  Information for ATC350: Used in 27107643748  Information for ATC35L: Used in 27107643754
62	SP01208	22313422956	1 piece	Mounting	Information for ATC300: Used in 27107613153, 27107613152  Information for ATC350: Used in 27107643749  Information for ATC35L: Used in 27107643755
63	SP00176	33117525064	1 piece	Plug	
64	Not available		1 piece	Shim	
65	Not available		1 piece	Shim	
	N927 00 04	00004330136; 00004330563; 83220397244; 83222409710	1 piece	Transmission Fluid	Shipment in 1 liter bottles. Fillgrade information please see Oil List.
	SP02000		1 piece	Sealant	Sealant SILICON BLACK (1pce = 300ml)