

### Transfer Case ATC300

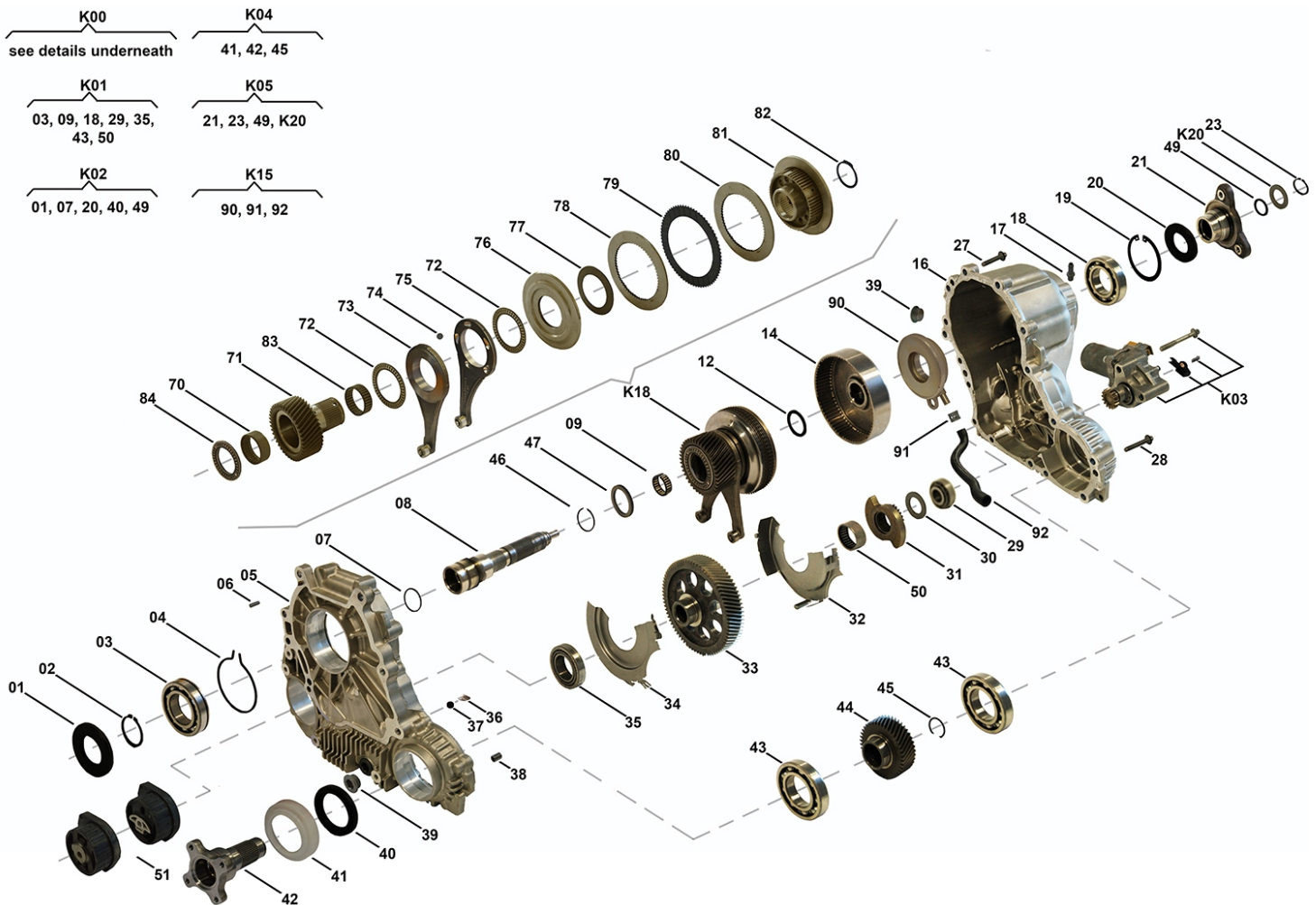
N922 00 01, N922 00 02

OEM No: 27107599690; 27107599693; 27107613152; 27107613153

#### Brands

Brand	Modelseries
BMW	3; 5

#### List of parts



Pos	Part number	OEM no	Quantity	Product name	Info
'I01	N922 00 01	27107599690; 27107599693		OE References	27107546677, 27107548666, 27107549030, 27107552701, 27107599690, 27107599691, 27107599693
'I02	N922 00 02	27107613152; 27107613153		OE References	27107613152, 27107613153
'K00	SP02033		1 piece	Repair Kit	Contains position K03, 01, 03, 07, 09, 12, 18, 20, 23, 29, 35, 39, 40, 43, 46, 49, 50, 70, 72, 77, 78, 79, 80, 82, 83, 84, 90, 91 Detailed information can be found in Categories "Repair Kit's"
'K01	SP00593		1 piece	Bearing Kit	Contains position 03, 09, 18, 29, 35, 43, 50

All rights reserved.  
This publication may not be reproduced in any form, in whole or in part, without a written approval from JP (Automatic Transmissions) Ltd. Subject to change without notice!

### Transfer Case ATC300

N922 00 01, N922 00 02

OEM No: 27107599690; 27107599693; 27107613152; 27107613153

#### List of parts

Pos	Part number	OEM no	Quantity	Product name	Info
'K02	N922 05 01		1 piece	Sealing Kit	Contains position 01, 07, 20, 40, 49
'K03	N922 35 01	27107546671	1 piece	Actuator Kit	Supplied with Code Resistor
'K04	SP00117	27107548115	1 piece	Flange Kit Front	Contains position 41, 42, 45 Including Tube of Assembly Paste
'K05	SP00118	27107548116	1 piece	Flange Kit Rear	Contains position 21, 23, 49, K20
'K15	N922 38 01		1 piece	Oil Pump ASM	Contains position 90, 91, 92
'K18	N922 29 01		1 piece	Sprocket ASM	
'K20	SP00115	27107546670	1 piece	Shim Set	Contains 13 different Shims with Dimensions from 2.90mm up to 4.10mm
01	N902 15 01	27107539262	1 piece	Radial Sealing	
02	SP00160		1 piece	Retaining Ring	
03	N902 46 01		1 piece	Ball Bearing	
04	SP00140		1 piece	Retaining Ring	
05	Not available		1 piece	Housing Front	
06	SP00154		2 pieces	Pin	
07	N902 16 01	27107537630	1 piece	O-Ring	
08	SP00767		1 piece	Main Shaft ASM	
09	N902 23 02		1 piece	Needle Bearing	
12	N922 22 02		1 piece	Thrust Washer	
14	N902 29 03		1 piece	Drum	Information for ATC400: Used in 27103455133, 27103455134
16	Not available		1 piece	Housing Rear	
17	SP00128		1 piece	Vent Pipe	
18	N902 46 02		1 piece	Ball Bearing	
19	SP00203		1 piece	Retaining Ring	
20	N922 15 01	27107546667	1 piece	Radial Sealing	
21	SP00208	27107558255	1 piece	Flange Rear	
23	SP00112	27107539525; 331381LA0A	1 piece	Retaining Ring	
27	SP00180		8 pieces	Tapping Screw	
28	SP00220		7 pieces	Tapping Screw	
29	N922 46 04		1 piece	Taper Roller Bearing	
30	N922 22 01		1 piece	Thrust Washer	
31	N922 29 02		1 piece	Actuator Cam	
32	SP00215		1 piece	Oil Plate Housing Front	
33	N922 29 04		1 piece	Intermediate Gear	
34	SP00216		1 piece	Oil Plate Housing Rear	
35	N922 46 06		1 piece	Taper Roller Bearing	
36	SP00224		1 piece	Clip	
37	SP00130	05143630AA; A2102760098	1 piece	Magnet	
38	SP00155		2 pieces	Pin	
39	SP00176	33117525064	2 pieces	Plug	
40	N902 15 02	27107539266	1 piece	Radial Sealing	
41	Only available in K04		1 piece	Flange Front	
42	SP00103	27107537665	1 piece	Slinger	
43	N922 46 03		2 pieces	Ball Bearing	
44	N922 29 03		1 piece	Gear Front Output	
45	SP00223	27107546679	1 piece	Snap Ring	
46	SP00201		1 piece	Snap Ring	
47	N922 22 03		1 piece	Thrust Washer	
49	N902 16 02	27107537631	1 piece	O-Ring	

All rights reserved.

This publication may not be reproduced in any form, in whole or in part, without a written approval from JP (Automatic Transmissions) Ltd. Subject to change without notice!

### Transfer Case ATC300

N922 00 01, N922 00 02

OEM No: 27107599690; 27107599693; 27107613152; 27107613153

#### List of parts

Pos	Part number	OEM no	Quantity	Product name	Info
50	N922 46 05		1 piece	Needle Bearing	
51	SP01207	22316773125	1 piece	Mounting	Information for ATC300: Used in 27107599690, 27107599693  Information for ATC350: Used in 27107643748  Information for ATC35L: Used in 27107643754
51	SP01208	22313422956	1 piece	Mounting	Information for ATC300: Used in 27107613153, 27107613152  Information for ATC350: Used in 27107643749  Information for ATC35L: Used in 27107643755
70	N902 23 04		1 piece	Needle Sleeve	
71	Only available in K18		1 piece	Spur Gear	
72	SP00134		2 pieces	Needle Ring Axial	
73	SP00396		1 piece	Actuator Ring	
74	SP00302		5 pieces	Ball	
75	SP00397		1 piece	Actuator Ring	
76	SP00003		1 piece	Piston	
77	N901 24 01		4 pieces	Disk Spring	
78	Only available in K00 & K18		1 piece	Shim Set	Contains Shim Dimensions 3.40, 3.60, 3.80
79	Only available in K00 & K18		6 pieces	Torque Transfer Shim	
80	Only available in K00 & K18		7 pieces	Steel Plate	
81	Only available in K18		1 piece	Hub	
82	Only available in K00 & K18		1 piece	Retaining Ring	
83	N902 23 03		1 piece	Needle Ring Axial	
84	N922 23 01		1 piece	Axial Needle Roller Bearing	
90	Only available in K00 & K15		1 piece	Oil Pump	
91	Only available in K00 & K15		1 piece	Clamp	
92	Only available in K15		1 piece	Suction Pipe	
	N927 00 04	00004330136; 00004330563; 83220397244; 83222409710	1 piece	Transmission Fluid	Shipment in 1 liter bottles. Fillgrade information please see Oil List.
	SP02000		1 piece	Sealant	Sealant SILICON BLACK (1pce = 300ml)

All rights reserved.

This publication may not be reproduced in any form, in whole or in part, without a written approval from JP (Automatic Transmissions) Ltd. Subject to change without notice!